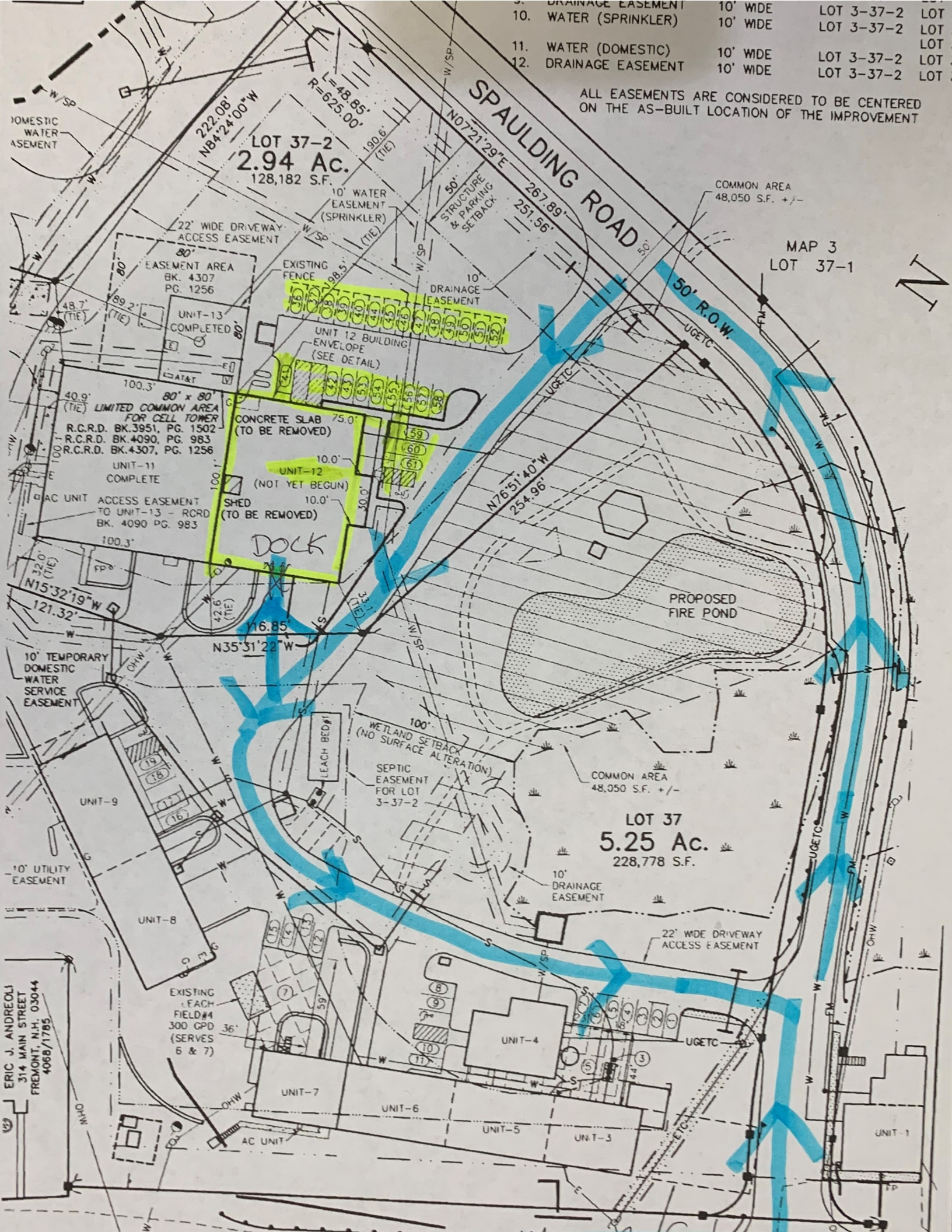
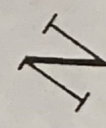


- 9. DRAINAGE EASEMENT 10' WIDE LOT 3-37-2 LOT
- 10. WATER (SPRINKLER) 10' WIDE LOT 3-37-2 LOT
- 11. WATER (DOMESTIC) 10' WIDE LOT 3-37-2 LOT
- 12. DRAINAGE EASEMENT 10' WIDE LOT 3-37-2 LOT

ALL EASEMENTS ARE CONSIDERED TO BE CENTERED ON THE AS-BUILT LOCATION OF THE IMPROVEMENT



MAP 3
LOT 37-1



LOT 37-2
2.94 Ac.
128,182 S.F.

LOT 37
5.25 Ac.
228,778 S.F.

DOCK

PROPOSED FIRE POND

ERIC J. ANDREOLI
314 MAIN STREET
FREMONT, N.H. 03044
4068/1785

EXISTING LEACH FIELD #4
300 CPD
(SERVES 6 & 7)

10' TEMPORARY DOMESTIC WATER SERVICE EASEMENT

10' UTILITY EASEMENT

WETLAND SETBACK (NO SURFACE ALTERATION)

SEPTIC EASEMENT FOR LOT 3-37-2

COMMON AREA 48,050 S.F. +/-

10' DRAINAGE EASEMENT

22' WIDE DRIVEWAY ACCESS EASEMENT

DOMESTIC WATER EASEMENT

EASEMENT AREA BK. 4307 PG. 1256

LIMITED COMMON AREA FOR CELL TOWER R.C.R.D. BK. 3951, PG. 1502 R.C.R.D. BK. 4090, PG. 983 R.C.R.D. BK. 4307, PG. 1256

UNIT-11 COMPLETE

ACCESS EASEMENT TO UNIT-13 - RCRD BK. 4090 PG. 983

CONCRETE SLAB (TO BE REMOVED)

UNIT-12 (NOT YET BEGUN)

SHED (TO BE REMOVED)

LEACH BED

UNIT-4

UNIT-7

UNIT-6

UNIT-5

UNIT-3

UNIT-1

UNIT-13 COMPLETED

UNIT 12 BUILDING ENVELOPE (SEE DETAIL)

10' DRAINAGE EASEMENT

10' WATER EASEMENT (SPRINKLER)

50' STRUCTURE & PARKING SETBACK

COMMON AREA 48,050 S.F. +/-

SPAULDING ROAD

50' R.O.W.

W/SP

W/SP

W/SP

W/SP

W/SP

W/SP

W/SP

W/SP

W/SP

W/SP

W/SP

W/SP

W/SP

W/SP

W/SP

W/SP

W/SP

W/SP

W/SP

W/SP

W/SP

W/SP

W/SP

W/SP

W/SP

W/SP

W/SP

W/SP

W/SP